



# Simplex and Wall Mounting Blocks

The fastest installation for ventilation systems





# The easiest installation for ventilation systems

Have you decided on a decentralized ventilation system with inVENTer and want to save time during installation? The wall installation blocks and the Simplex system are just right for you. They are used like a brick and already have a suitable opening for the wall sleeve of your ventilation system. With the Simplex, this is already integrated with the correct slope.



Your local contact person is happy to help with planning:  
[www.inventer.eu/partners](http://www.inventer.eu/partners)

## Wall Installation Blocks

The wall installation blocks replace the core hole for installing the inVENTer systems. In new-built houses, they are integrated into the masonry during the shell construction phase. Depending on the wall thickness, several blocks are connected to one another. The wall installation blocks are made of Neopor® / Fire behavior: flame retardant (DIN 4101-B1).

### Wall Installation Block WEB D-120

Suitable for inVENTer systems with a 100 mm wall sleeve diameter.



Wall installation set aV100

For the installation of inVENTer exhaust air devices in the external wall

Wall vent aV100 ALD

For an inVENTer exhaust air system without heat recovery

### Wall Installation Block WEB D-180

Suitable for the following inVENTer systems:



iV-Smart+

iV-Light

Decentralised compact ventilation with heat recovery

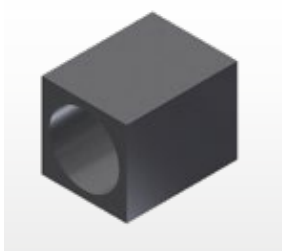
iV-Compact

Wall vent aV160 ALD

For an inVENTer exhaust air system without heat recovery

### Wandeinbaublock WEB D-200

Suitable for the following inVENTer systems:



iV14-Zero

Decentralised HRV with high sound insulation

iV14-MaxAir

Decentralised HRV for large rooms

iV-Twin+

Decentralised HRV for single rooms

# Quick installation with Simplex

We have prepared something for you: The Simplex has all the requirements for a quick installation of your ventilation system. The wall sleeve is already integrated, it is individually adapted to your building project and is simply inserted like a brick.

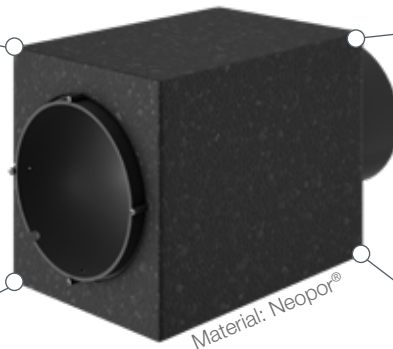
**This saves you 30 minutes of installation time per device!**

Integrated wall sleeve with slope

Professional sound decoupling

For every wall thickness

Diffusion-tight / -open according to RAL



Material: Neopor®

## Three steps to a ventilation system with Simplex



### 1 Insertion into the masonry

- + Length adapted to the wall thickness of the construction project
- + Height in stone dimensions ex works



### 2 Applying the plaster

- + Concealed, interior plaster, exterior plaster
- + Wall sleeve already adapted



### 3 Attaching the covers

- + Outside: weather protection hood in the color of your choice
- + Inside: Flair inner cover or Connect inner cover

## Our Service



Do you have a specific project in the form of a new building or renovation and would like a planning proposal?

You can find your **inVENTer representative** here!

Or just send your request to:

**planung@inventer.de**

inVENTer GmbH  
Ortsstraße 4a  
D-07751 Löberschütz  
Phone: +49 (0) 36427 211-0  
Fax: +49 (0) 36427 211-113  
E-mail: [info@inventer.de](mailto:info@inventer.de)  
Web: [www.inventer.eu](http://www.inventer.eu)

