

## iV-Light

### Performance

Wall Thickness [mm]	≥ 290
Wall Opening Ø [mm]	180
Heat Recovery Rate [%]	84
Airflow (Heat Recovery Mode) [m³/h]	5 - 21
Airflow (Extract Air Mode) [m³/h]	10 - 42
Power Consumption [W]	1 - 3
Power Consumption per Airflow [W/(m³/h)]	0.2
Fan Voltage [V DC]	6 - 16
Sound Emission, 2m [dB(A)]	14 - 36
Standard Sound-Level Difference [dB]	34 - 47
Energy Label "ErP"	A+ / A



### Features

Description	decentralized mechanical ventilation system with heat recovery for new build and refurbishment
Inner Cover	inner cover "Light" 220 x 220 mm with integrated filter G4, insulation and quick closing function, white RAL 9010
Outside Cover	round weather protection grille "Light" Ø 200 mm
Wall Sleeve	round wall sleeve Ø 160 mm in length 495 mm / 745 mm
Heat Recovery	regenerative heat recovery approach by solid ceramic cell with hexagonal structure, leading to heat recovery rate 84 % according to DIN EN 13141-8
Fan	highly efficient Xenion® reversible fan with 70s-cycles, fulfills S3-classification according to DIN EN 13141-8
Guide Vanes	inVENTron® guide vane technology
Ventilation modes	heat recovery mode / ventilation mode
Frost Protection	-20 °C by reversible fan operation and temperature sensor

### Controller / Additional Parts

Controller	sMove s4 / s8 or wireless control inVENTer Connect (Controller Easy Connect e16 with app control)
Sensor	sMove: CO <sub>2</sub> -sensor CS1, HYG12, HYG18 inVENTer Connect: CS2, Humidity/Temperature in-/outside
Sound Protection	sound absorbing insert, sound protector
Filter	dust filter G4 (ISO Coarse 60%) included as standard

### Warranty\*

5 year warranty for the fan, electronics and the wall sleeve,  
30 year warranty for the ceramic cell

## iV-Smart+

### Performance

Wall Thickness [mm]	≥ 270
Wall Opening Ø [mm]	180
Heat Recovery Rate [%]	87
Airflow (Heat Recovery Mode) [m³/h]	8.5 - 29
Airflow (Extract Air Mode) [m³/h]	17 - 58
Power Consumption [W]	1 - 3
Power Consumption per Airflow [W/(m³/h)]	0.15
Fan Voltage [V DC]	6 - 16
Sound Emission, 2m [dB(A)]	14 - 37
Standard Sound-Level Difference [dB]	38 - 49
Energy Label "ErP"	A+ / A



### Features

Description	decentralized mechanical ventilation system with heat recovery for new build and refurbishment
Inner Cover	inner cover "Flair" 233 x 233 mm with integrated filter G4, airflow guidance function and quick closing, white RAL 9010
Outside Cover	weather protection hood "Smart" or: weather protection hood "Flex" 279 x 313 x 88 mm with grid, RAL 9016 / RAL 9006 / RAL 7011 / special color
Wall Sleeve	round wall sleeve Ø 160 mm in length 495 mm / 745 mm
Heat Recovery	regenerative heat recovery approach by solid ceramic cell with hexagonal structure, leading to heat recovery rate 87 % according to DIN EN 13141-8
Fan	highly efficient Xenion® reversible fan with 70s-cycles, fulfills S3-classification according to DIN EN 13141-8
Guide Vanes	inVENTron® guide vane technology
Ventilation Modes	heat recovery mode / ventilation mode
Frost Protection	-20 °C by reversible fan operation and temperature sensor

### Controller / Additional Parts

Controller	sMove s4 / s8 or wireless control inVENTer Connect (Controller Easy Connect e16 with app control)
Sensor	sMove: CO <sub>2</sub> -sensor CS1, HYG12, HYG18 inVENTer Connect: CS2, Humidity/Temperature in-/outside
Sound Protection	sound absorbing insert, sound protector
Filter	dust filter G4 (ISO Coarse 60%) included, options: pollen filter F5 (ISO Coarse 75%), activated carbon filter

### Warranty\*

5 year warranty for the fan, electronics and the wall sleeve,  
30 year warranty for the ceramic cell

## iV-Smart+ Corner

### Performance

Wall Thickness [mm]	≥ 270
Insulation Thickness [mm]	≥ 70
Wall Opening Ø [mm]	180
Heat Recovery Rate [%]	87
Airflow (Heat Recovery Mode) [m³/h]	8.5 - 29
Airflow (Extract Air Mode) [m³/h]	17 - 58
Power Consumption [W]	1 - 3
Power Consumption per Airflow [W/(m³/h)]	0.15
Fan Voltage [V DC]	6 - 16
Sound Emission, 2m [dB(A)]	14 - 37
Standard Sound-Level Difference [dB]	53 - 59
Energy Label "ErP"	A+ / A



### Features

Description	decentralized mechanical ventilation system with heat recovery and hidden outside grille
Inner Cover	inner cover "Flair" 233 x 233 mm with integrated filter G4, airflow guidance function and quick closing, white RAL 9010
Outside Cover	external metal grille 70 x 512 mm for reveal integration, RAL 9016 / RAL 9006 / RAL 7011 / RAL 7016 / special color
Wall Sleeve	round wall sleeve Ø 160 mm in length 495 mm / 745 mm
Heat Recovery	regenerative heat recovery approach by solid ceramic cell with hexagonal structure, leading to heat recovery rate 87 % according to DIN EN 13141-8
Fan	highly efficient Xenion® reversible fan with 70s-cycles, fulfills S3-classification according to DIN EN 13141-8
Guide Vanes	inVENTron® guide vane technology
Ventilation Modes	heat recovery mode / ventilation mode
Frost Protection	-20 °C by reversible fan operation and temperature sensor

### Controller / Additional Parts

Controller	sMove s4 / s8 or wireless control inVENTer Connect (Controller Easy Connect e16 with app control)
Sensor	sMove: CO <sub>2</sub> -sensor CS1, HYG12, HYG18 inVENTer Connect: CS2, Humidity/Temperature in-/outside
Sound Protection	sound absorbing insert, sound protector
Filter	dust filter G4 (ISO Coarse 60%) included, options: pollen filter F5 (ISO Coarse 75%), activated carbon filter

### Warranty\*

5 year warranty for the fan, electronics and the wall sleeve, 30 year warranty for the ceramic cell

## iV14-Zero

### Performance

Wall Thickness [mm]	≥ 255
Wall Opening Ø [mm]	225
Heat Recovery Rate [%]	87
Airflow (Heat Recovery Mode) [m³/h]	8.5 - 29
Airflow (Extract Air Mode) [m³/h]	17 - 58
Power Consumption [W]	1 - 3
Power Consumption per Airflow [W/(m³/h)]	0.15
Fan Voltage [V DC]	6 - 16
Sound Emission, 2m [dB(A)]	10 - 31
Standard Sound-Level Difference [dB]	48 - 56
Energy Label "ErP"	A+ / A



### Features

Description	sound optimized decentralized mechanical ventilation system with heat recovery for new build and refurbishment
Inner Cover	inner cover "Flair Zero" 233 x 233 mm with integrated filter G4, airflow guidance function, quick closing, white RAL 9010
Outside Cover	weather protection hood "Flex Zero" 279 x 313 x 88 mm with grid, RAL 9016 / RAL 9006 / RAL 7011 / special color
Wall Sleeve	round wall sleeve Ø 200 mm in length 495 mm / 745 mm with integrated sound absorber made of Inventin®
Heat Recovery	regenerative heat recovery approach by solid ceramic cell with hexagonal structure, leading to heat recovery rate 87 % according to DIN EN 13141-8
Fan	highly efficient Xenion® reversible fan with 70s-cycles, fulfills S3-classification according to DIN EN 13141-8
Guide Vanes	inVENTron® guide vane technology
Ventilation Modes	heat recovery mode / ventilation mode
Frost Protection	-20 °C by reversible fan operation and temperature sensor

### Controller / Additional Parts

Controller	sMove s4 / s8 or wireless control inVENTer Connect (Controller Easy Connect e16 with app control)
Sensor	sMove: CO <sub>2</sub> -sensor CS1, HYG12, HYG18 inVENTer Connect: CS2, Humidity/Temperature in-/outside
Sound Protection	sound absorbing insert, sound protector
Filter	dust filter G4 (ISO Coarse 60%) included, options: pollen filter F5 (ISO Coarse 75%), activated carbon filter

### Warranty\*

5 year warranty for the fan, electronics and the wall sleeve,  
30 year warranty for the ceramic cell

## iV14-Zero Corner

### Performance

Wall Thickness [mm]	≥ 255
Insulation Thickness [mm]	≥ 70
Wall Opening Ø [mm]	225
Heat Recovery Rate [%]	87
Airflow (Heat Recovery Mode) [m³/h]	8.5 - 29
Airflow (Extract Air Mode) [m³/h]	17 - 58
Power Consumption [W]	1 - 3
Power Consumption per Airflow [W/(m³/h)]	0.15
Fan Voltage [V DC]	6 - 16
Sound Emission, 2m [dB(A)]	10 - 31
Standard Sound-Level Difference [dB]	55 - 60
Energy Label "ErP"	A+ / A



### Features

Description	sound optimized decentralized mechanical ventilation system with heat recovery and hidden outside grille
Inner Cover	inner cover "Flair Zero" 233 x 233 mm with integrated filter G4, airflow guidance function, quick closing, white RAL 9010
Outside Cover	external metal grille 70 x 512 mm for reveal integration, RAL 9016 / RAL 9006 / RAL 7011 / RAL 7016 / special color
Wall Sleeve	round wall sleeve Ø 200 mm in length 495 mm / 745 mm with integrated sound absorber made of Inventin®
Heat Recovery	regenerative heat recovery approach by solid ceramic cell with hexagonal structure, leading to heat recovery rate 87 % according to DIN EN 13141-8
Fan	highly efficient Xenion® reversible fan with 70s-cycles, fulfills S3-classification according to DIN EN 13141-8
Guide Vanes	inVENTron® guide vane technology
Ventilation Modes	heat recovery mode / ventilation mode
Frost Protection	-20 °C by reversible fan operation and temperature sensor

### Controller / Additional Parts

Controller	sMove s4 / s8 or wireless control inVENTer Connect (Controller Easy Connect e16 with app control)
Sensor	sMove: CO <sub>2</sub> -sensor CS1, HYG12, HYG18 inVENTer Connect: CS2, Humidity/Temperature in-/outside
Sound Protection	sound absorbing insert, sound protector
Filter	dust filter G4 (ISO Coarse 60%) included, options: pollen filter F5 (ISO Coarse 75%), activated carbon filter

### Warranty\*

5 year warranty for the fan, electronics and the wall sleeve,  
30 year warranty for the ceramic cell

## iV-Twin+

### Performance

Wall Thickness [mm]	≥ 270
Wall Opening Ø [mm]	225
Heat Recovery Rate [%]	94
Airflow (Heat Recovery Mode) [m³/h]	5 - 23
Airflow (Extract Air Mode) [m³/h]	10 - 45
Power Consumption [W]	0.5 - 3
Power Consumption per Airflow [W/(m³/h)]	0.18
Fan Voltage [V DC]	6 - 16
Sound Emission, 2m [dB(A)]	14 - 38
Standard Sound-Level Difference [dB]	45 - 56
Type of Protection	IP X4
Energy Label "ErP"	A+ / A



### Features

Description	single room decentralized mechanical ventilation system with heat recovery for new build and refurbishment
Inner Cover	inner cover "Flair Twin+" 233 x 233 mm with vertical airflow separation, quick closing, white RAL 9010
Outside Cover	weather protection hood "Flex Twin+" 279 x 313 x 88 mm with grid and vertical airflow separation, RAL 9016 / RAL 9006 / RAL 7011 / special color
Wall Sleeve	round wall sleeve Ø 200 mm in length 495 mm / 745 mm with separator for airflow separation
Heat Recovery	regenerative heat recovery approach by solid double ceramic cells with hexagonal structure, leading to heat recovery rate 94 % according to DIN EN 13141-8
Fan	highly efficient double Xenion® reversible fans with 70s-cycles
Ventilation Modes	heat recovery mode / ventilation mode
Frost Protection	-20 °C by reversible fan operation and temperature sensor

### Controller / Additional Parts

Controller	sMove s4 / s8
Sensor	CO <sub>2</sub> -sensor CS1, HYG12, HYG18
Sound Protection	sound absorbing insert, sound protector
Filter	double dust filter G3 (ISO Coarse 45%) included, options: pollen filter F5 (ISO Coarse 75%), activated carbon filter

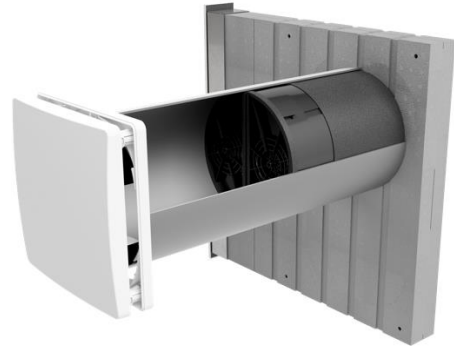
### Warranty\*

5 year warranty for the fan, electronics and the wall sleeve,  
30 year warranty for the ceramic cell

## iV-Twin+ Corner

### Performance

Wall Thickness [mm]	≥ 270
Insulation Thickness [mm]	≥ 70
Wall Opening Ø [mm]	225
Heat Recovery Rate [%]	94
Airflow (Heat Recovery Mode) [m³/h]	5 - 23
Airflow (Extract Air Mode) [m³/h]	10 - 45
Power Consumption [W]	0.5 - 3
Power Consumption per Airflow [W/(m³/h)]	0.18
Fan Voltage [V DC]	6 - 16
Sound Emission, 2m [dB(A)]	14 - 38
Standard Sound-Level Difference [dB]	50 - 57
Type of Protection	IP X4
Energy Label "ErP"	A+ / A



### Features

Description	single room decentralized mechanical ventilation system with heat recovery for new build and refurbishment
Inner Cover	inner cover "Flair Twin+" 233 x 233 mm with vertical airflow separation, quick closing, white RAL 9010
Outside Cover	external metal grille 70 x 512 mm for reveal integration, RAL 9016 / RAL 9006 / RAL 7011 / RAL 7016 / special color
Wall Sleeve	round wall sleeve Ø 200 mm in length 495 mm / 745 mm with separator for airflow separation
Heat Recovery	regenerative heat recovery approach by solid double ceramic cells with hexagonal structure, leading to heat recovery rate 94 % according to DIN EN 13141-8
Fan	highly efficient double Xenion® reversible fans with 70s-cycles
Ventilation Modes	heat recovery mode / ventilation mode
Frost Protection	-20 °C by reversible fan operation and temperature sensor

### Controller / Additional Parts

Controller	sMove s4 / s8
Sensor	CO <sub>2</sub> -sensor CS1, HYG12, HYG18
Sound Protection	sound absorbing insert, sound protector
Filter	double dust filter G3 (ISO Coarse 45%) included, options: pollen filter F5 (ISO Coarse 75%), activated carbon filter

**Warranty\*** 5 year warranty for the fan, electronics and the wall sleeve, 30 year warranty for the ceramic cell

## iV14-MaxAir

### Performance

Wall Thickness [mm]	≥ 280
Wall Opening Ø [mm]	225
Heat Recovery Rate [%]	88
Airflow (Heat Recovery Mode) [m³/h]	10 - 45
Airflow (Extract Air Mode) [m³/h]	20 - 90
Power Consumption [W]	1 - 5
Power Consumption per Airflow [W/(m³/h)]	0.14
Fan Voltage [V DC]	6 - 16
Sound Emission, 2m [dB(A)]	20 - 45
Standard Sound-Level Difference [dB]	38 - 45
Energy Label "ErP"	A+ / A



### Features

Description	decentralized mechanical ventilation system with heat recovery and high airflow for new build and refurbishment
Inner Cover	inner cover "Flair" 233 x 233 mm with integrated filter G4, airflow guidance function, quick closing, white RAL 9010
Outside Cover	weather protection hood "Flex" 279 x 313 x 88 mm with grid, RAL 9016 / RAL 9006 / RAL 7011 / special color
Wall Sleeve	round wall sleeve Ø 200 mm in length 495 mm / 745 mm
Heat Recovery	regenerative heat recovery approach by solid ceramic cell with hexagonal structure, leading to heat recovery rate 88 % according to DIN EN 13141-8
Fan	highly efficient Xenion® EFP reversible fan with 70s-cycles, fulfills S2-classification according to DIN EN 13141-8
Guide Vanes	inVENTron® guide vane technology
Ventilation Modes	heat recovery mode / ventilation mode
Frost Protection	-20 °C by reversible fan operation and temperature sensor

### Controller / Additional Parts

Controller	sMove s4 / s8
Sensor	CO <sub>2</sub> -sensor CS1, HYG12, HYG18
Sound Protection	sound absorbing insert, sound protector
Filter	dust filter G4 (ISO Coarse 60%) included, options: pollen filter F5 (ISO Coarse 75%), activated carbon filter

### Warranty\*

5 year warranty for the fan, electronics and the wall sleeve,  
30 year warranty for the ceramic cell



## iV-Compact

### Performance

Wall Thickness [mm]	≥ 140
Wall Opening Ø [mm]	180
Heat Recovery Rate [%]	72
Airflow (Heat Recovery Mode) [m³/h]	10.5 - 29
Airflow (Extract Air Mode) [m³/h]	21 - 58
Power Consumption [W]	1 - 3
Power Consumption per Airflow [W/(m³/h)]	0.18
Fan Voltage [V DC]	6 - 16
Sound Emission, 2m [dB(A)]	12 - 37
Standard Sound-Level Difference [dB]	32
Energy Label "ErP"	A



### Features

Description	compact decentralized mechanical ventilation system with heat recovery for thin walls ≥ 140 mm
Inner Cover	inner cover "Flair" 233 x 233 mm with integrated filter G4, airflow guidance function and quick closing, white RAL 9010
Outside Cover	weather protection hood "Compact" 203 x 276 x 80 mm, metal, grey RAL 9006
Wall Sleeve	round wall sleeve Ø 160 mm in length 230 mm
Heat Recovery	regenerative heat recovery approach by solid ceramic cell with hexagonal structure, leading to heat recovery rate 72 % according to DIN EN 13141-8
Fan	highly efficient Xenion® reversible fan with 70s-cycles, fulfills S3-classification according to DIN EN 13141-8
Guide Vanes	inVENTron® Slim guide vane technology
Ventilation Modes	heat recovery mode / ventilation mode
Frost Protection	-20 °C by reversible fan operation and temperature sensor

### Controller / Additional Parts

Controller	sMove s4 / s8 or wireless control inVENTer Connect (Controller Easy Connect e16 with app control)
Sensor	sMove: CO <sub>2</sub> -sensor CS1, HYG12, HYG18 inVENTer Connect: CS2, Humidity/Temperature in-/outside
Sound Protection	sound absorbing insert, sound protector
Filter	dust filter G4 (ISO Coarse 60%) included, options: pollen filter F5 (ISO Coarse 75%), activated carbon filter

### Warranty\*

5 year warranty for the fan, electronics and the wall sleeve,  
30 year warranty for the ceramic cell

## iV-Office

### Performance

Wall Thickness [mm]	≥ 260
Wall Opening Ø [mm]	270
Heat Recovery Rate [%]	88
Airflow (Heat Recovery Mode) [m³/h]	10 - 45
Airflow (Extract Air Mode) [m³/h]	20 - 90
Power Consumption [W]	1 - 5
Power Consumption per Airflow [W/(m³/h)]	0.14
Fan Voltage [V DC]	6 - 16
Sound Emission, 2m [dB(A)]	12 - 37
Standard Sound-Level Difference [dB]	49 - 55
Energy Label "ErP"	A+ / A



### Features

Description	sound optimized decentralized mechanical ventilation system with heat recovery and high airflow
Inner Cover	inner cover "Flair XL" 280 x 280 mm with integrated filter G4, airflow guidance function, quick closing, white RAL 9010
Outside Cover	weather protection hood "Flex Office" 279 x 313 x 88 mm with grid, RAL 9016 / RAL 9006 / RAL 7011 / special color
Wall Sleeve	round wall sleeve Ø 250 mm in length 495 mm / 745 mm with integrated sound absorber made of Inventin®
Heat Recovery	regenerative heat recovery approach by solid ceramic cell with hexagonal structure, leading to heat recovery rate 88 % according to DIN EN 13141-8
Fan	highly efficient Xenion® EFP reversible fan with 70s-cycles, fulfills S2-classification according to DIN EN 13141-8
Guide Vanes	inVENTron® guide vane technology
Ventilation Modes	heat recovery mode / ventilation mode
Frost Protection	-20 °C by reversible fan operation and temperature sensor

### Controller / Additional Parts

Controller	sMove s4 / s8
Sensor	CO <sub>2</sub> -sensor CS1, HYG12, HYG18
Sound Protection	sound absorbing insert, sound protector
Filter	dust filter G4 (ISO Coarse 60%) included, options: pollen filter F5 (ISO Coarse 75%), activated carbon filter

### Warranty\*

5 year warranty for the fan, electronics and the wall sleeve,  
30 year warranty for the ceramic cell

## sMove s4 / s8 Controller

### Performance

Number of controlled iV-units, sMove s4	2 - 4
Number of controlled iV-units, sMove s8	2 - 8
Ventilation Zones	1
Main Voltage, Input PSU [V AC] / [Hz]	230 / 50
Operating Voltage [V DC]	24
Power Consumption sMove s4 [W]	max. 11
Power Consumption sMove s8 [W]	max. 20
Standby [W]	0.5
Analogue Input (optional) [V DC]	0 - 10
Protection Class	II
Type of Protection	IP 20



### Features

Description	basic controller for decentralized iV-ventilation units
Controls	smooth sliding controller with capacitive touchpad
Indication	LED lights
Operating Unit	housing 86 x 86 x 24 mm with acrylic glass cover (RAL 9016)
PSU	PSU for flush-mounted installation or PSU for switch cabinet installation
Ventilation Mode	heat recovery mode / ventilation mode, boost function
Ventilation Levels	smooth, orientation levels at 25 %, 35 %, 50 %, 100 %
Pause Function	selectable: 1 / 2 / 4 or 8 hour(s)
Hours Run Meter	retrieving data by LED indication
Filter Change	integrated indicator
Deactivation Block	“Flat” version (no switch off, only pause function available)
External Switching Contact	potential-free NOC (use for CO <sub>2</sub> -sensor CS1, HYG12, HYG18, pressure control sensor ZP4 or others)
Home Control	integration possible

### Warranty\*

5 year warranty for electronics

## Easy Connect e16 Wireless Controller

### Performance

Number of controlled iV-units	2 - 16
Ventilation Zones	1 - 4
Wireless Network [MHz]	868
Range Wireless Network, open space [m]	100
Range Wireless Network, buildings [m]	20
Interface	Bluetooth / RS485
Main Voltage, Input PSU [V AC] / [Hz]	230 / 50
Operating Voltage [V DC]	5
Power Consumption [W]	0.6
Standby [W]	0.4
Protection Class	II
Type of Protection	IP X2



### Features

Description	wireless control panel for decentralized ventilation systems
Controls	smartphone app: inVENTer Mobile (iOS, Android), programming and controls by Bluetooth or user interface
Indication	display, app, LED lights
Operating Unit	housing 90 x 90 x 15 mm with display
Ventilation Mode	heat recovery mode / ventilation mode, local demand control, temperature and dew point related control
Ventilation Levels	multi-level, selectable between 25 – 100%
Ventilation Profiles	ventilation profile for every ventilation zone selectable: sleeping rooms, children's room, bathroom, living room, kitchen, holiday mode, cellar ventilation, summer mode and free programming of default profiles according to own need
Pause Function	selectable for every ventilation zone: 1 / 2 / 4 or 8 hour(s)
Boost Function	selectable for every ventilation zone: 1 / 2 / 4 or 8 hour(s)
Hours Run Meter	for every ventilation zone
Filter Change	yes by filter manager
Maintenance Interval	yes by maintenance manager
Sensors	integrated humidity/temperature sensor, additional wireless sensors: humidity/temperature inside and outside (FTS19), carbon dioxide sensor (CS2), switch for pressure control sensor ZP4 (SK19)
<b>Warranty*</b>	5 year warranty for electronics

## Wireless Inner Cover Connect

### Performance

Number of controlled iV-units	1
Wireless Network [MHz]	868
Range Wireless Network, open space [m]	100
Range Wireless Network, buildings [m]	20
Installation Depth, flush-mounted [mm]	+40
Main Voltage, Input PSU [V AC] / [Hz]	230 / 50
Operating Voltage [V DC]	24
Power Consumption [W]	5
Standby [W]	0.8
Sound Emission, 2m with iV14-Zero [dB(A)]	9 - 29
Sound Emission, 2m with iV-Smart+ [dB(A)]	13 - 35
Protection Class	II
Type of Protection	IP 20



### Features

Description	inner cover for wireless control of the decentralized mechanical ventilation systems: iV-Smart+, iV14-Zero, iV-Light, iV-Compact (replaces standard inner covers "Flair" or "Light")
Controls	Easy Connect e16 wireless controller via 868 MHz wireless network
Wall Installation	flush-mounted / surface mounted
Flap	automatic closing feature of flap at pause or off
Repeater Function	inner cover can be used as repeater if necessary
Filter	dust filter G3 (ISO Coarse 45%) included, options: pollen filter F5 (ISO Coarse 75%), activated carbon filter
Housing	separated, according to ventilation system: housing 240 x 240 x 38 mm for wall sleeve R-D160 (iV-Smart+, iV-Light, iV-Compact) / wall sleeve R-D200 (iV14-Zero)
<b>Warranty*</b>	5 year warranty for electronics

## USTS 100 Pulsar Overcurrent System

### Performance

Wall Thickness [mm]	≥ 120
Wall Opening Ø [mm]	115
Airflow (Continuous Mode) [m <sup>3</sup> /h]	30
Power Consumption [W]	4
Main Voltage [V AC] / [Hz]	230 / 50
Main Voltage, optional [V DC]	24
Sound Emission [dB(A)]	17 - 20



### Features

Description	wall vent system with overcurrent function for ventilation support within domestic buildings
Inner Cover Front	overcurrent fan Ø 177 mm
Inner Cover Back	inner cover 160 x 160 mm with integrated filter G1 and quick closing
Wall Sleeve	round wall sleeve Ø 103 mm in length 250 mm
Fan	multifunctional overcurrent fan
Ventilation Mode	continuous ventilation, automatic ventilation cycles, local demand control by light sensor or temperature threshold, silent scheduling, boost mode

### Controller / Additional Parts

Controller	mobile device by app "inVENTer Mobile" (iOS, Android), programming and control via Bluetooth
Sensor	light sensor, temperature sensor
Sound Protection	sound absorbing insert
Filter	dust filter G1 (ISO Coarse) included as standard

### Warranty\*

5 year warranty for the fan and the wall sleeve